

PAGE	
REV. NO	

APPROVAL SHEET

CUSTOMER : _____

ITEM : SMD POWER INDUCTOR

PART NAME : NS1280 Series

SPEC : NS1280

APPROVED	REFEERENCE

(Date : 2021-07-29)

TESTED	CHECKED BY	APPROVED BY



NAMSUN ELECTRONICS CO.,LTD



Na-3506, CHUNG ANG CIRCULATION COMPLEX 15
 GYUNGINRO 53-GIL GURO-GU SEOUL 08217 ,KOREA
 TEL: 02-2689-9418/02-6679-9418 , FAX: 02-2689-8628
 Homepage : www.nsn.co.kr / E-mail : sun@nsn.co.kr

CUSTOMER :

SPECIFICATION		SHEET NO.	1/5
PART NAME	NS1280	DESCRIPTION	12.0x12.0x8mm

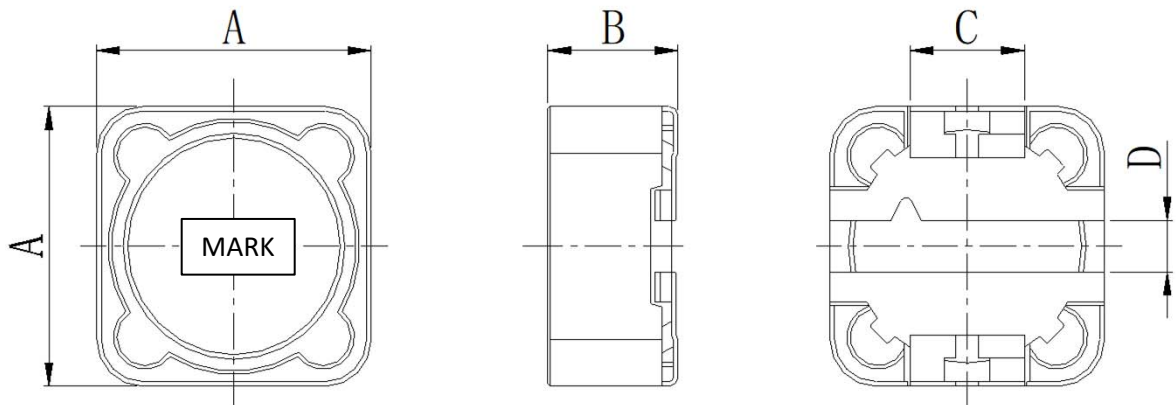
1. INDEX

Page No.	Item	Remarks
1/5	1. Index	
2/5	2. Dimension 3. Packing Spec	
3/5	4. Solder Reflow	
4/5	5. Electrical Characteristics	
5/5	5. Electrical Characteristics 6. Environmental Characteristics	

CUSTOMER :

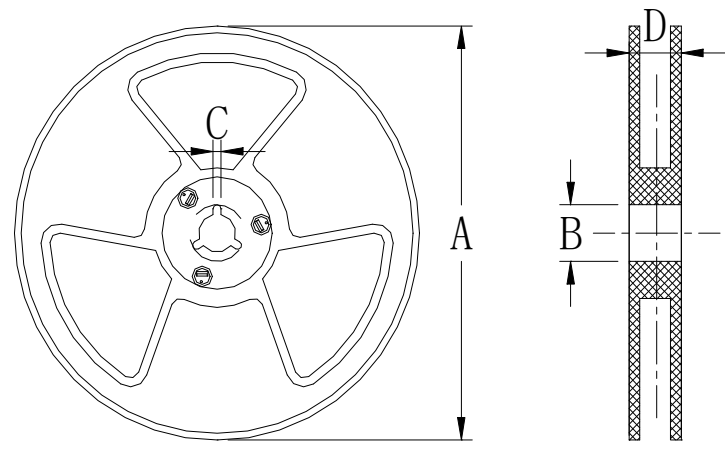
SPECIFICATION		SHEET NO.	2/5
PART NAME	NS1280	DESCRIPTION	12.0x12.0x8mm

2. DIMENSION (Unit:mm)



CODE	A	B	C	D
SMD 1280	12.3 MAX	8.0 MAX	4.9±0.1	2.2±0.2

3. PACKING SPEC (Unit:mm)

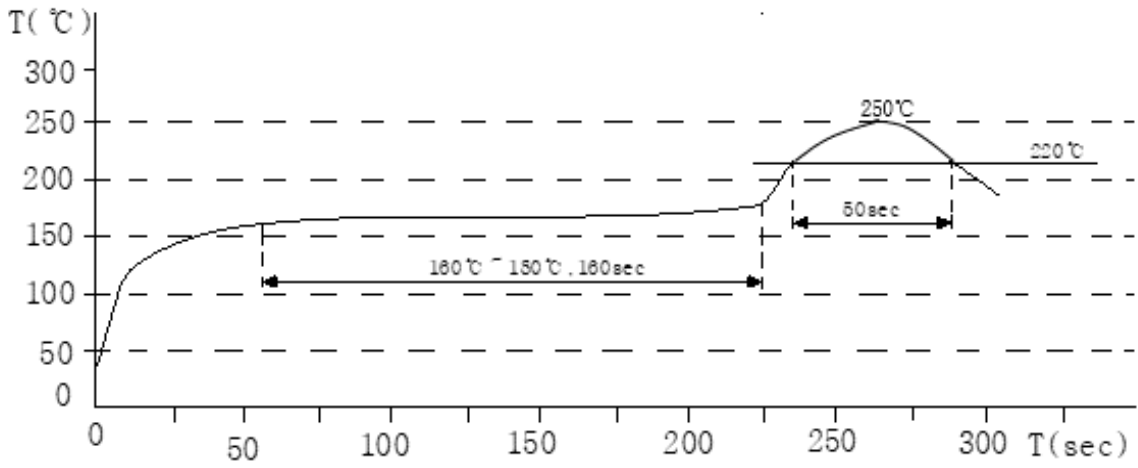


CODE	A	B	C	D
SMD 1280	Φ330±2.0	Φ90±2.0	2.3	21.5

CUSTOMER :

SPECIFICATION		SHEET NO.	3/5
PART NAME	NS1280	DESCRIPTION	12.0x12.0x8mm

4. SOLDER REFLOW



CUSTOMER :

SPECIFICATION		SHEET NO.	4/5
PART NAME	NS1280	DESCRIPTION	12.0x12.0x8mm

5. ELECTRICAL CHARACTERISTICS

PART No.	NOMINAL INDUCTANCE (uH)	Tol.	Test freq.	DCR (Ω)MAX	IDC (A)MAX
SMD1280-1R0N	1.0	±30%	100KHz 0.25V	0.00700	10.40
SND1280-1R5N	1.5			0.00850	9.20
SND1280-1R8N	1.8			0.00850	9.20
SND1280-2R2N	2.2			0.01100	8.40
SND1280-2R7N	2.7			0.01220	7.80
SND1280-3R3N	3.3			0.01300	7.60
SND1280-3R9N	3.9			0.01400	7.20
SND1280-4R7N	4.7			0.01580	6.80
SND1280-5R6N	5.6			0.01670	6.70
SND1280-6R8N	6.8			0.01840	6.50
SND1280-7R6N	7.6			0.02000	5.90
SMD1280-100M	10	±20%	1KHz 0.25V	0.02340	5.40
SMD1280-120M	12			0.02600	4.90
SMD1280-150M	15			0.02860	4.50
SMD1280-180M	18			0.03920	3.90
SMD1280-220M	22			0.04320	3.60
SMD1280-270M	27			0.05109	3.30
SMD1280-330M	33			0.06480	3.00
SMD1280-390M	39			0.07290	2.75
SMD1280-470M	47			0.10000	2.50
SMD1280-560M	56			0.11000	2.35
SMD1280-680M	68			0.14000	2.10
SMD1280-820M	82			0.16000	1.95
SMD1280-101M	100			0.22000	1.70
SMD1280-121M	120			0.25000	1.60
SMD1280-151M	150	0.28000	1.42		

CUSTOMER :

SPECIFICATION		SHEET NO.	5/5
PART NAME	NS1280	DESCRIPTION	12.0x12.0x8mm

5. ELECTRICAL CHARACTERISTICS

PART No.	NOMINAL INDUCTANCE (uH)	Tol.	Test freq.	DCR (Ω)MAX	IDC (A)MAX
SMD1280-181M	180	±20%	1KHz 0.25V	0.29000	1.30
SMD1280-221M	220			0.29900	1.16
SMD1280-271M	270			0.40300	1.06
SMD1280-331M	330			0.45500	0.95
SMD1280-391M	390			0.49400	0.88
SMD1280-471M	470			0.68900	0.79
SMD1280-561M	560			0.79300	0.73
SMD1280-681M	680			0.90000	0.67
SMD1280-821M	820			1.10000	0.60
SMD1280-102M	1000			1.40000	0.53
SMD1280-222M	2200			2.69000	0.50
SMD1280-332M	3300			3.20000	0.36
SMD1280-472M	4700			3.50000	0.10

Rated current : The DC current at which the inductance decreases to 90% of its initial value or when $\Delta t=40^{\circ}\text{C}$, whichever is lower($T_a=25^{\circ}\text{C}$)

* TEST CONDITION

TEST INSTRUMENT : HP4291B、502BC、CH1062

TEMPERATURE : 25°C

HUMIDITY : 60%

6. ENVIRONMENTAL CHARACTERISTICS

Operating Temperature	-40 ~ +100°C	
Storage Temperature Range	-40 ~ +100°C	
MOISTURE RESISTANCE	90~95(%), 40±2(°C) 96HRS Than the filter is no visible damaged not exceed spec.	
INSULATION RESISTANCE	COIL & CORE	DC 100 [V] , 100 [MΩ] MIN, 5 MINUTES