

PAGE	
REV.NO	

APPROVAL SHEET

CUSTOMER : _____

ITEM : SMD POWER INDUCTOR

PART NAME : NS4532 Series

SPEC : NS4532

APPROVED	REFEERENCE

(Date : 2021-07-29)

TESTED	CHECKED BY	APPROVED BY



NAMSUN ELECTRONICS CO.,LTD

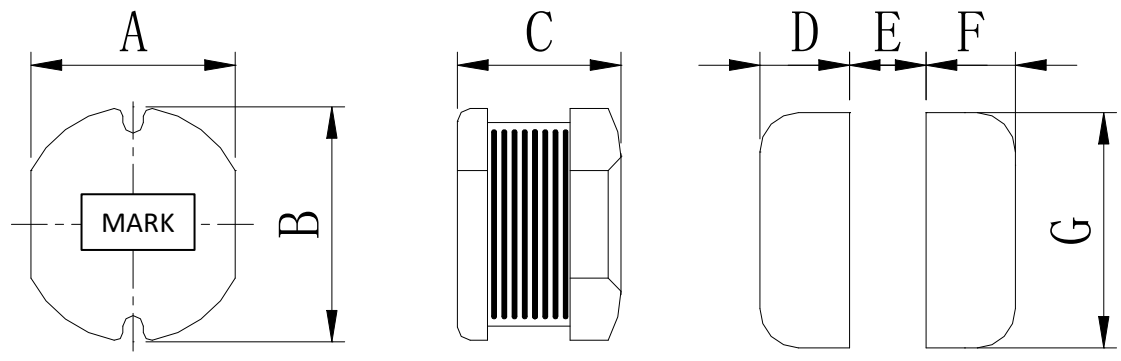


Na-3506, CHUNG ANG CIRCULATION COMPLEX 15
 GYUNGINRO 53-GIL GURO-GU SEOUL 08217 ,KOREA
 TEL: 02-2689-9418/02-6679-9418 , FAX: 02-2689-8628
 Homepage : www.nsn.co.kr / E-mail : sun@nsn.co.kr

CUSTOMER :

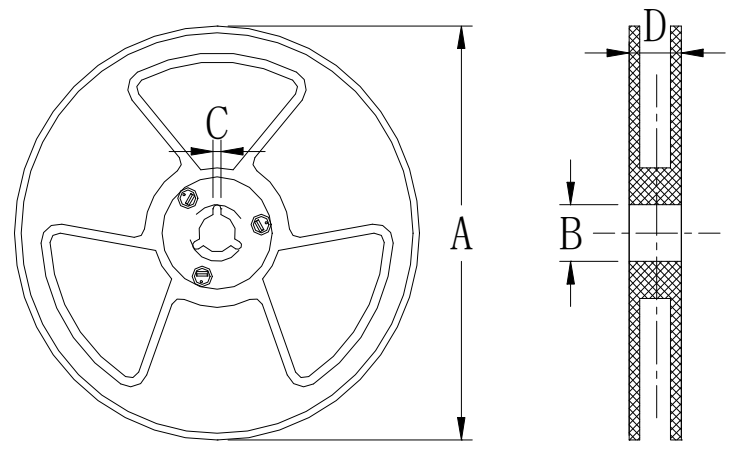
SPECIFICATION		SHEET NO.	2/5
PART NAME	NS4532	DESCRIPTION	4.5x3.2mm

2. DIMENSION (Unit:mm)



CODE	A	B	C	D	E	F	G
SMD 4532	4.0±0.3	4.5±0.3	3.2±0.3	1.75	1.50	1.75	4.50

3. PACKING SPEC (Unit:mm)

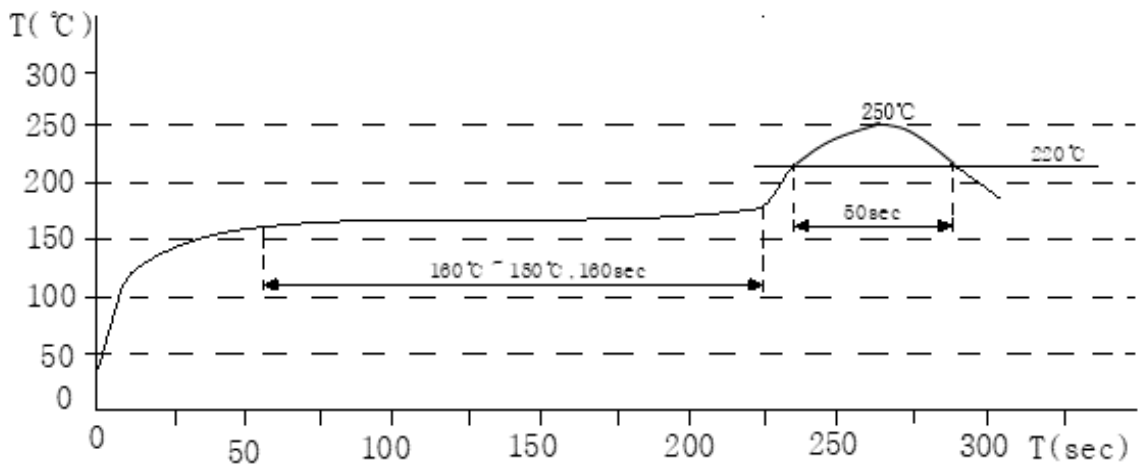


CODE	A	B	C	D
SMD 4532	Φ330±2.0	Φ90±2.0	2.3	21.5

CUSTOMER :

SPECIFICATION		SHEET NO.	3/5
PART NAME	NS4532	DESCRIPTION	4.5x3.2mm

4. SOLDER REFLOW



CUSTOMER :

SPECIFICATION		SHEET NO.	4/5
PART NAME	NS4532	DESCRIPTION	4.5x3.2mm

5. ELECTRICAL CHARACTERISTICS

PART No.	NOMINAL INDUCTANCE (uH)	Tol.	Test freq.	DCR (Ω)MAX	IDC (A)MAX
NS4532-1R0M	1.0	±20%	100KHz 0.25V	0.0200	2.60
NS4532-2R2M	2.2			0.0420	2.30
NS4532-3R3M	3.3			0.0510	2.10
NS4532-3R9M	3.9			0.0728	1.90
NS4532-4R7M	4.7			0.0760	1.60
NS4532-5R6M	5.6			0.0830	1.45
NS4532-6R8M	6.8			0.1000	1.35
NS4532-8R2M	8.2			0.1200	1.30
NS4532-100K	10	±10%	1KHz 0.25V	0.1500	1.00
NS4532-120K	12			0.1550	0.90
NS4532-150K	15			0.1950	0.80
NS4532-180K	18			0.2300	0.70
NS4532-220K	22			0.2700	0.60
NS4532-270K	27			0.3100	0.55
NS4532-330K	33			0.3450	0.50
NS4532-390K	39			0.4000	0.48
NS4532-470K	47			0.5250	0.40
NS4532-560K	56			0.5950	0.38
NS4532-680K	68			0.7400	0.33
NS4532-820K	82			0.8800	0.29
NS4532-101K	100			1.2000	0.26
NS4532-121K	120			1.2500	0.24
NS4532-151K	150			1.6000	0.22
NS4532-181K	180			2.0000	0.19
NS4532-221K	220	2.3500	0.18		

CUSTOMER :

SPECIFICATION		SHEET NO.	5/5
PART NAME	NS4532	DESCRIPTION	4.5x3.2mm

5. ELECTRICAL CHARACTERISTICS

PART No.	NOMINAL INDUCTANCE (uH)	Tol.	Test freq.	DCR (Ω)MAX	IDC (A)MAX
NS4532-271K	270	±10%	1KHz 0.25V	3.2500	0.16
NS4532-331K	330			3.5500	0.15
NS4532-391K	390			4.2000	0.13
NS4532-471K	470			4.9000	0.12
MS4532-561K	560			6.5000	0.10
NS4532-681K	680			8.3000	0.09
MS4532-821K	820			7.2100	0.14
NS4532-102K	1000			7.4200	0.12

Rated current : The DC current at which the inductance decreases to 90% of its initial value or when $\Delta t=40^{\circ}\text{C}$, whichever is lower($T_a=25^{\circ}\text{C}$)

* TEST CONDITION

TEST INSTRUMENT : HP4291B、502BC、CH1062

TEMPERATURE : 25°C

HUMIDITY : 60%

6. ENVIRONMENTAL CHARACTERISTICS

Operating Temperature	-40 ~ +100°C	
Storage Temperature Range	-40 ~ +100°C	
MOISTURE RESISTANCE	90~95(%), 40±2(°C) 96HRS Than the filter is no visible damaged not exceed spec.	
INSULATION RESISTANCE	COIL & CORE	DC 100 [V] , 100 [MΩ] MIN, 5 MINUTES